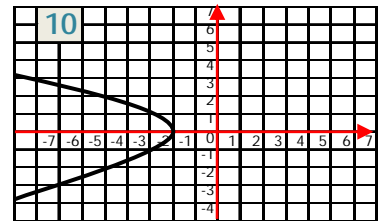
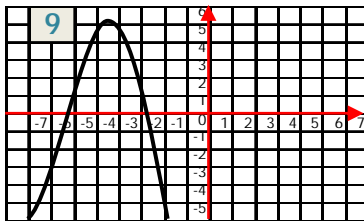
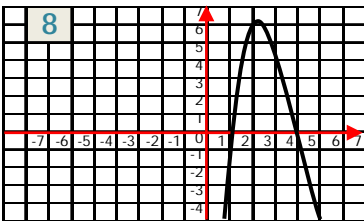
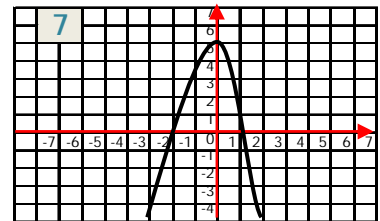
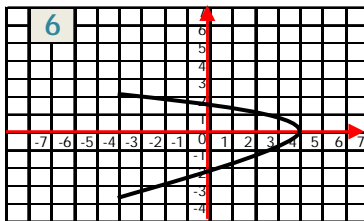
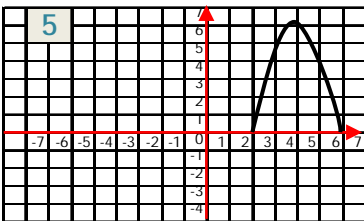


Quiz: Graphing Parabolas

1. What is the equation of the axis of symmetry for parabola with a turning point of (2, 2)?
2. Will the graph of parabola $y = -8x^2 + 7x - 3$ open upward or downward?
3. What is the equation of the axis of symmetry for the graph $y = 9x^2 + 6x - 1$?
4. What is turning point or vertex of the parabola whose equation is $y = 8x^2 + 16x - 5$?

At what point(s) does each parabola cross the x axis?



| | | | | | | | | | | | |
|------------------|----|-----|-----|-----|-----|-----|-----|-----|-----|-----|------|
| Circle # Correct | 0 | 1 | 2 | 3 | 4 | 5 | 6 | 7 | 8 | 9 | 10 |
| Percentage Score | 0% | 10% | 20% | 30% | 40% | 50% | 60% | 70% | 80% | 90% | 100% |